

Leeds, Grenville & Lanark District Health Unit (LGLDHU) Weekly Influenza Surveillance Summary

issued: Monday November 16, 2009 – 14:30 Hrs

Summary: This summary contains data for the week of Nov 07—Nov 13, 2009. The trend in Respiratory/Fever/ILI complaints at local hospital ED's is now downward with daily visit counts below the moving average. This decreasing trend in ED visits is also occurring in neighboring health units (KFLA, HPE, PCCHU). The trend for school absentees continues to decline in LGLDHU reporting schools from 46.0/1000 students last week to 15.9/1000 students this week.

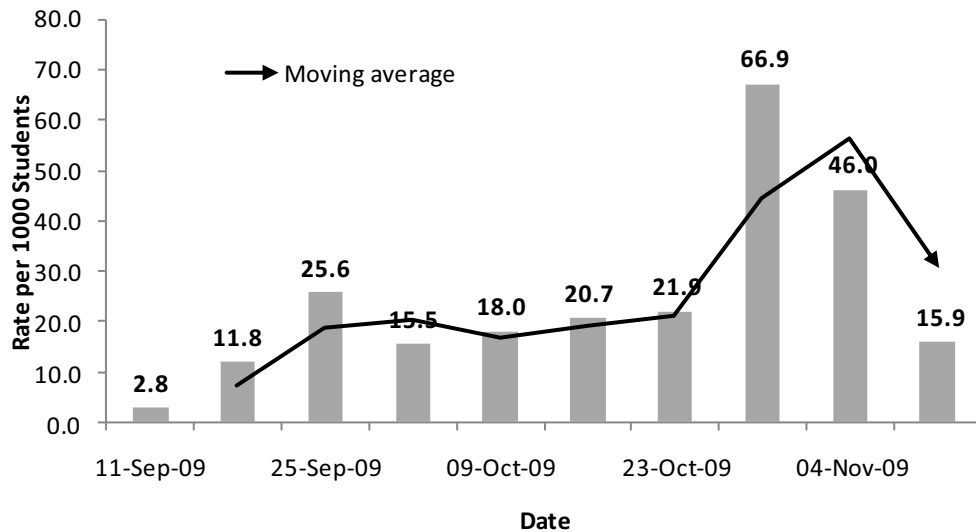
Lab update: LGLDHU currently has 15 lab-confirmed H1N1 cases this week compared to 30 last week (Nov 01—Nov 07). This brings the 4-week total to 84 positive H1N1 cases since October 18, 2009.

Most Recent Emergency Department Alerts (based on past 7 Days)

Date	Observed Visits	Alert Threshold	% Cases Reporting	Syndrome
------	-----------------	-----------------	-------------------	----------

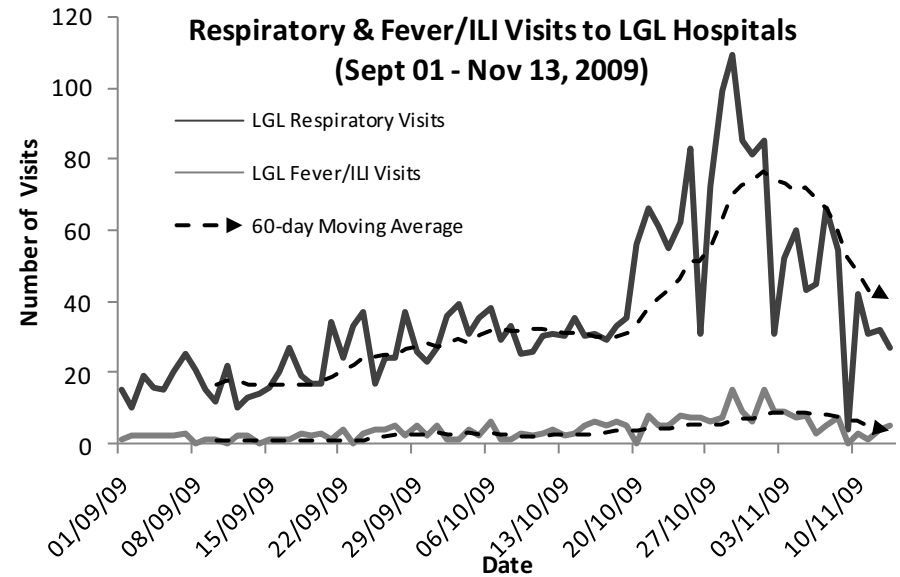
No alerts issued for the week of Nov 06—Nov 13

School Absenteeism Rates LGLDHU



For more information visit us at: www.healthunit.org

Respiratory/ILI ED Visits to Participating LGLDHU Hospitals



Note: Includes Brockville General, Smith's Falls, Great War Memorial hospitals

Summary of Influenza Indicators (Nov 07—Nov 13, 2009)

Measure	Trend Assessment	Comment
<i>Compared to Previous Week's Summary</i>		
Laboratory confirmed cases pH1N1	Lower	15 new lab-confirmed H1N1 cases this week compared to 30 last week.
Influenza A outbreaks	Lower	No new institutional outbreak reported.
Influenza activity in LGLDHU	Lower	Sporadic ILI activity in LGLDHU down from localized in previous week.
School absenteeism	Lower	Decrease from 46.0/1000 last week to 15.9/1000 students this week.
ILI consultation by sentinel physicians	Lower	81.1/1000 for Nov 01 to Nov 07. Was 312.5/1000 for previous week (2-week data delay).