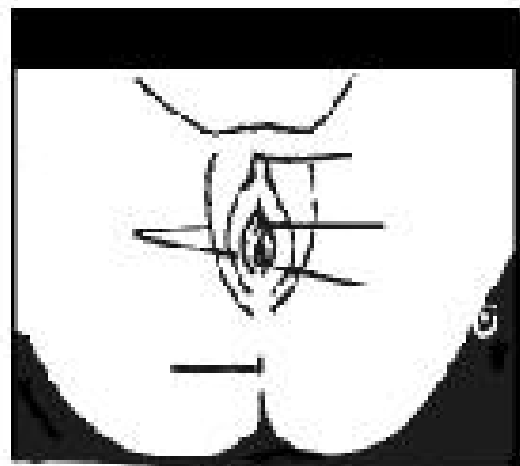
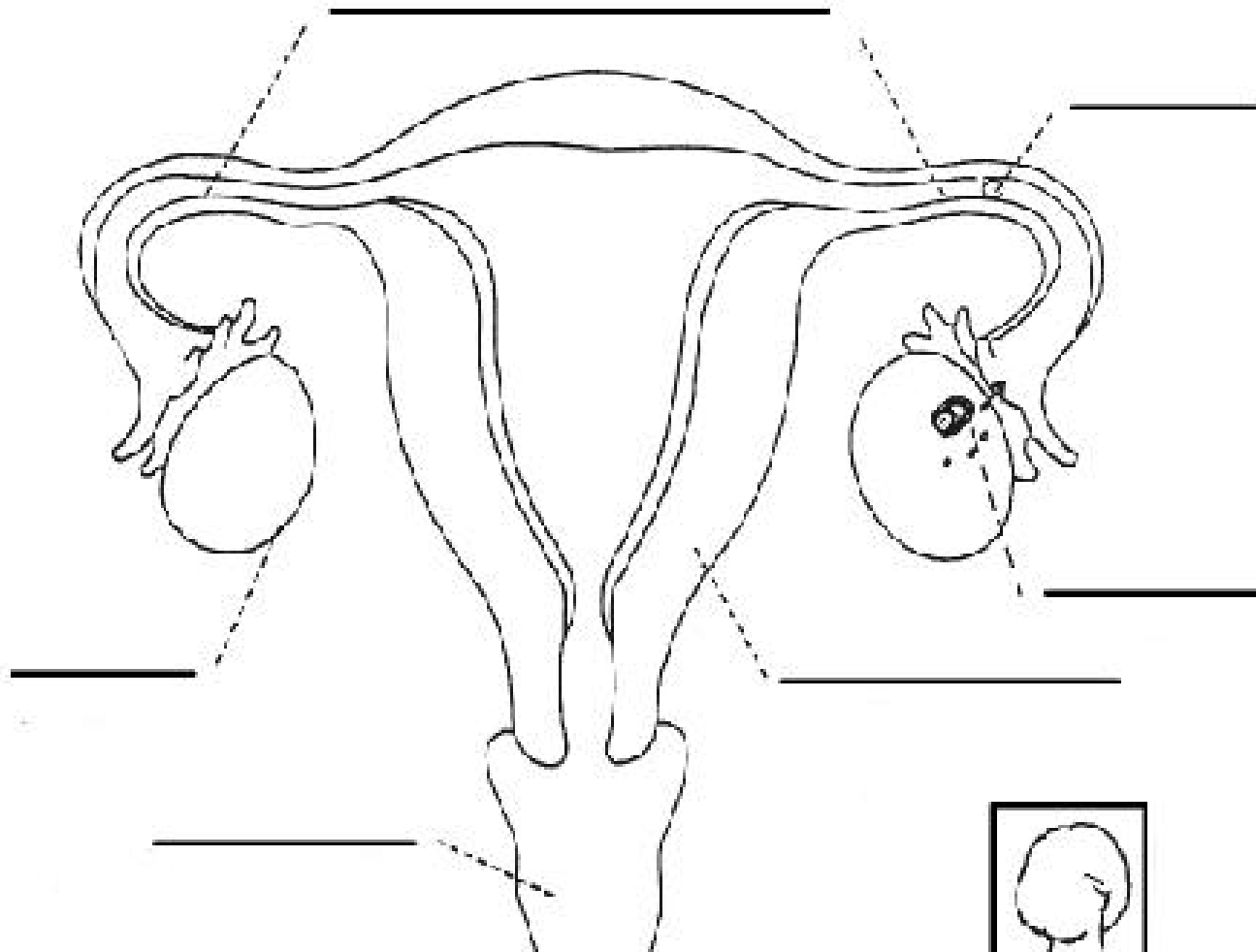


Female Reproductive System



4

The Female Anatomy/Reproductive System

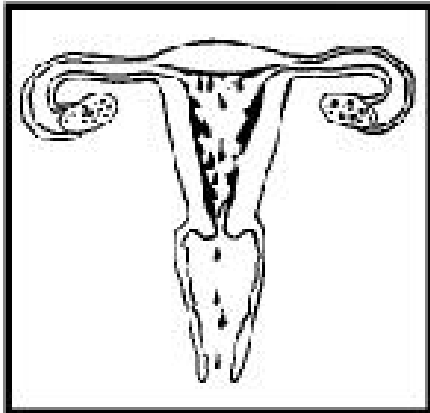
External Parts

- Vulva** – Name for the external or outer genital area that is visible between a girl's legs
- Labia Majora** – Folds of skin, covered with pubic hair that surround and protect the following parts: clitoris, urethra and vaginal opening
- Clitoris** – Small sensitive bump of skin above the urethral opening.
 - Rubbing or touching the clitoris can cause sexual pleasure
- Urethra** – Opening from which urine leaves the body
- Vaginal Opening** – Opening where blood leaves the woman's body when she has her period; from which a baby usually is born; it also accepts a man's penis during sexual intercourse.
- Anus** – The opening from which solid waste leaves the body.

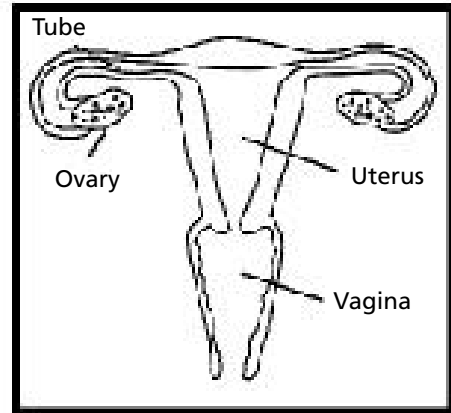
Internal Parts

- Vagina** – A warm, moist pouch leading from the woman's uterus to the outer part of her body
 - It is able to stretch wide enough to accept a penis, a tampon, or to permit a baby to be born
- Cervix** – Opening to the uterus, at the back of the vagina
 - Makes mucus that can either facilitate the passage of sperm during parts of the woman's cycle, or may block the passage of sperm during other parts of the cycle
- Uterus** – Where the menstrual discharge comes from during a woman's period; where a fetus will grow if a woman becomes pregnant
- Ovaries** – Female reproductive glands - a woman has two, one on each side of the uterus
 - Contains egg cells
 - Produces the female hormone (estrogen) which causes body and mood changes
- Tubes** – (It is not necessary that students know the name Fallopian tubes in order to understand female changes. Use the name if students do not have major language difficulties)
 - Passageway from ovary to uterus that the egg travels down; egg and sperm may join in the tube.
 - Tubes are about the diameter of pencil lead

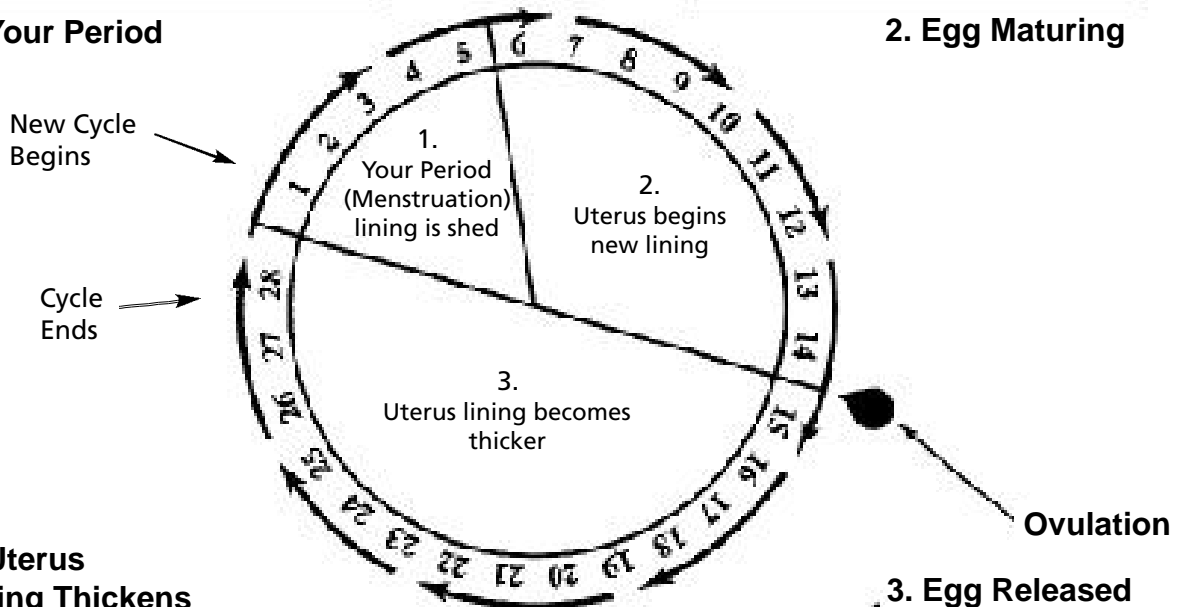
Your Menstrual Cycle



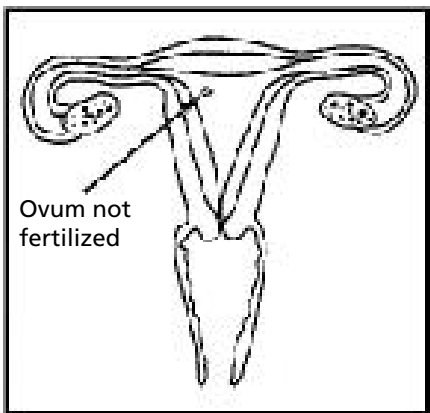
1. Your Period



2. Egg Maturing

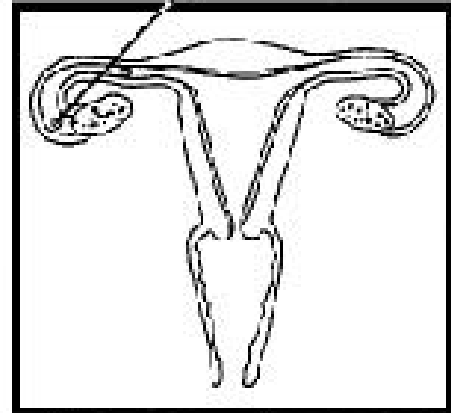


4. Uterus Lining Thickens



Ovum not fertilized

Egg + Sperm = Baby
or egg alone dissolves



3. Egg Released

Girls at Puberty

Fill in the blanks from the words in the box below.

Girls release _____ from their ovaries.

Girls usually release _____ egg each _____.

Eggs are in the _____.

In the year before a girl gets her periods, _____ discharge will come from her vagina onto her underwear.

A woman stops making eggs when she is _____.

A girl can tell that her ovaries are releasing eggs when she _____.

A period lasts _____.

When an egg and sperm come together this is called _____.

The place where a fertilized egg goes to grow and develop into a baby is the _____.

The warm, moist pouch which connects the uterus to the outside of the body is the _____.

Choose the right word!

<i>ovaries</i>	<i>uterus</i>	<i>starts having periods</i>	<i>one</i>
<i>fertilization</i>	<i>about 50 years old</i>	<i>vagina</i>	<i>month</i>
<i>eggs</i>	<i>3-7 days</i>	<i>white sticky</i>	