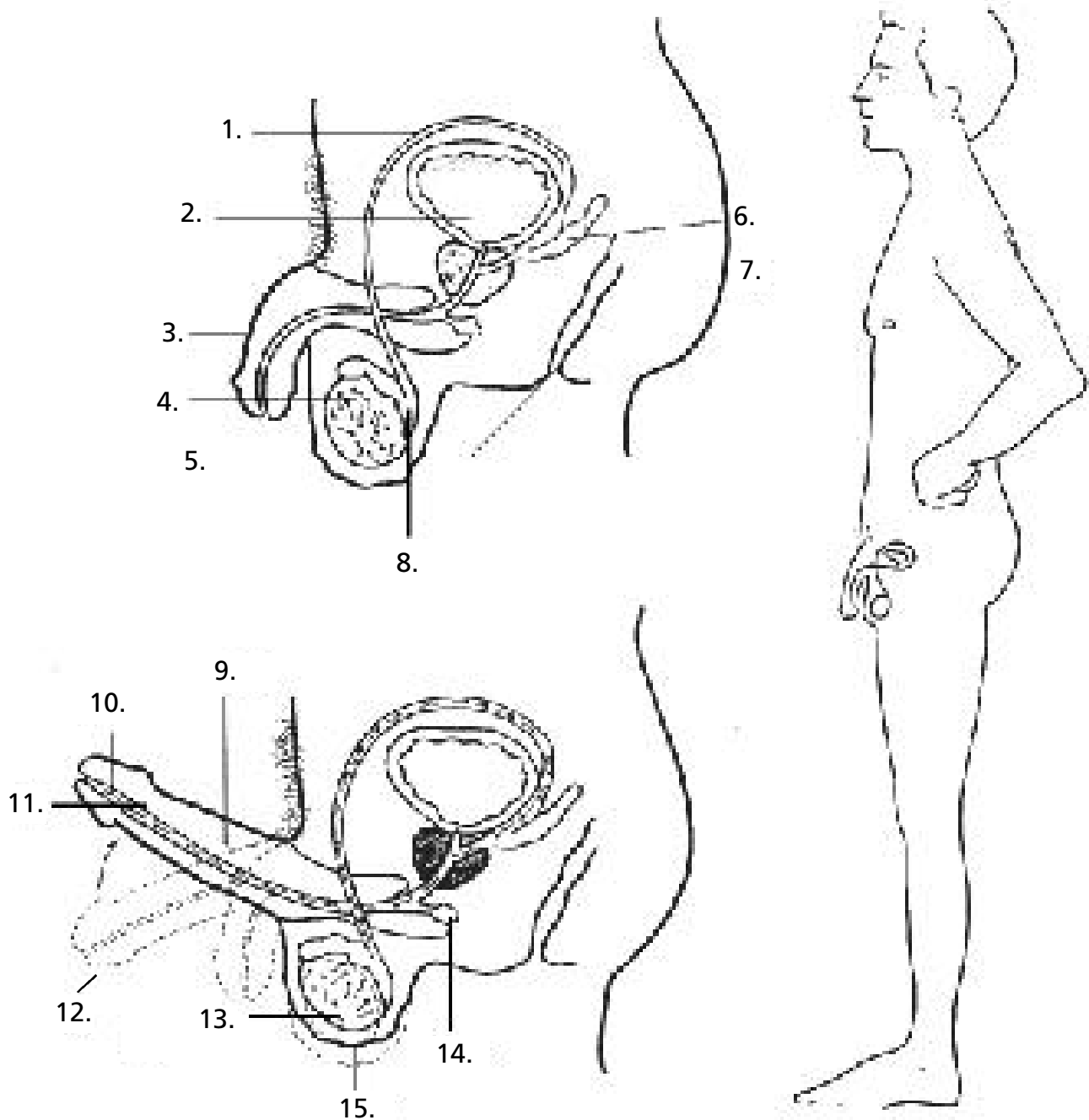


## Male Reproductive Organs - Answer Sheet



Label the diagram and explain the function of each reproductive organ:

- |                     |                   |                   |             |               |
|---------------------|-------------------|-------------------|-------------|---------------|
| 6. Seminal Vesicles | 2. Bladder        | 1. Vas deferens   | 3. Penis    | 9. Urethra    |
| 4. Testes           | 5. Anus           | 15. Scrotum       | 13. Sperm   | 8. Epididymis |
| 10. Semen           | 7. Prostate Gland | 14. Cowpers Gland | 12. Flaccid | 11. Erect     |