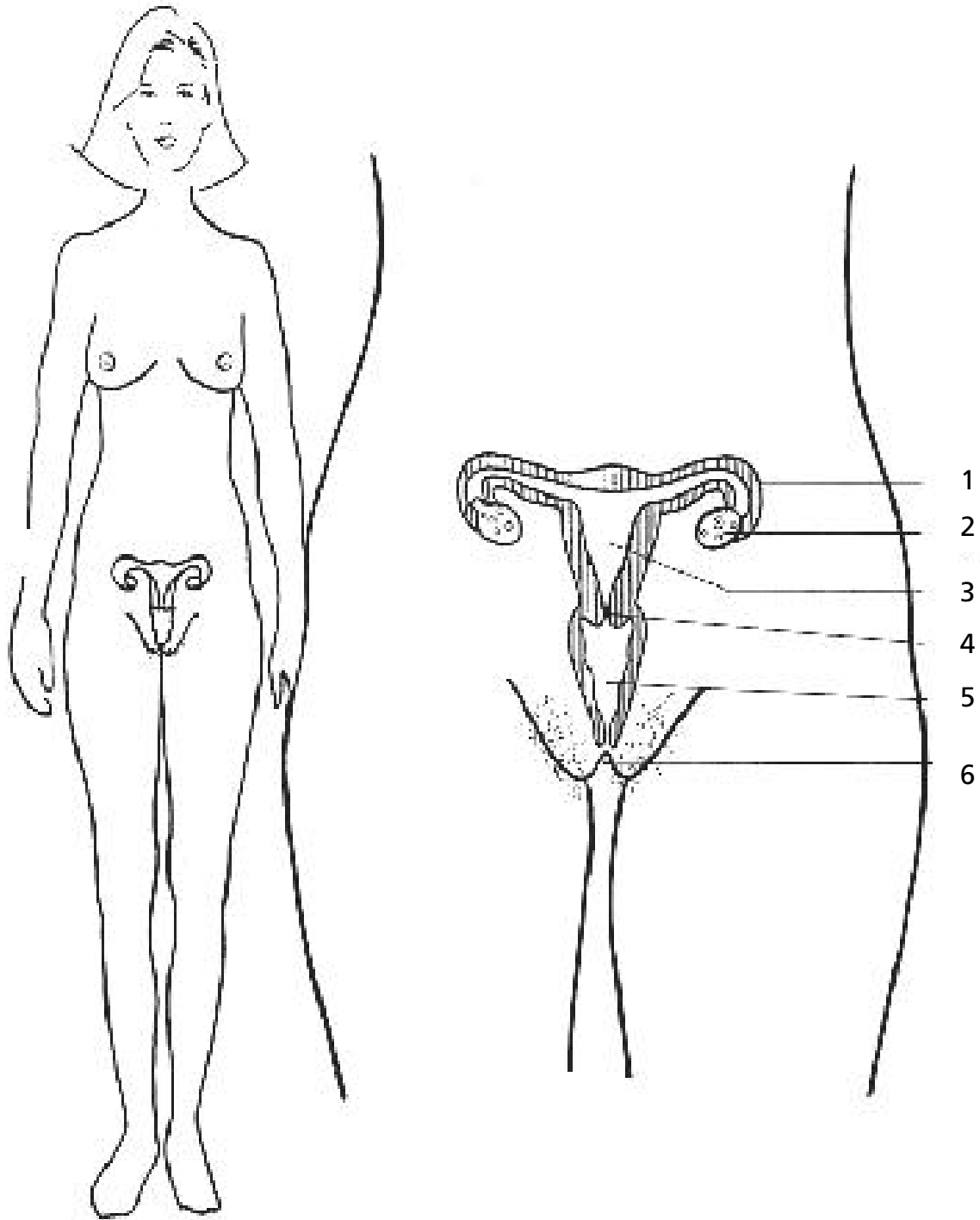


The Female Anatomy/Reproductive System

Clitoris	A highly sensitive organ above the urinary opening, which may provide pleasure and orgasm to females when stimulated.
Prepuce (clitoral hood)	A fold of skin covering the clitoris.
Mons	A fleshy pad of tissue which is covered with pubic hair.
Labia majora (outer labia)	Two folds of skin covered with pubic hair.
Labia minora (inner labia)	Two smaller folds of skin which meet just above the clitoris.
Urinary opening	The opening for urine.
Vaginal opening	The opening to the vagina.
Hymen	A thin membrane which partially covers the vagina.
Vagina	A muscular tube which expands to fit the penis during intercourse or a baby during birth.
Cervix	The narrow inner end of the vagina, which leads to the uterus.
Uterus	Pear-shaped organ which nourishes and holds a developing fetus. It prepares for a pregnancy each month by forming a blood and tissue lining.
Ovary	Two female reproductive glands, one on each side of the uterus that contain egg cells and produce the female hormone (estrogen) which causes body and mood changes.
Fallopian tubes	Tubes leading from the top of the uterus, with finger-like projections that surround an ovary.

Female Reproductive Organs



4

Label the diagram and explain the function of each reproductive organ:

Ovaries
Fallopian Tubes

Uterus
Vagina

Labia
Cervix